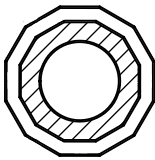
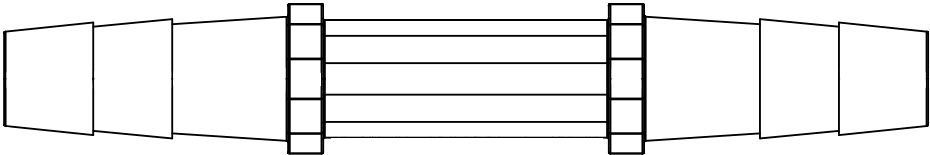
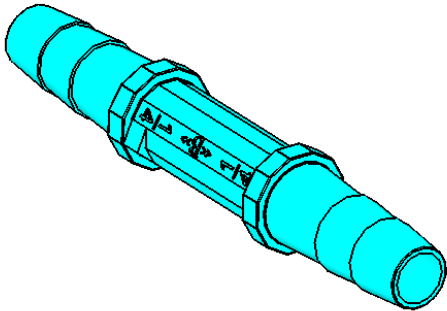
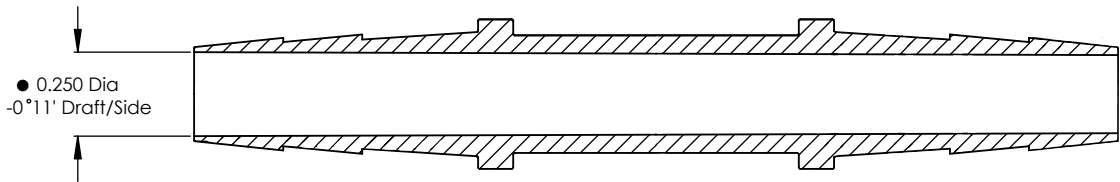


DATE	REV	DESCRIPTION	APPRV BY
10/15/91	B	ECO # 008/01	T. DIAMOND
1/28/92	C	ECO # 016	T. DIAMOND
1/1/95	D	ECO # 022	WTV



SECTION B-B
SCALE 3.5 : 1



SECTION A-A
SCALE 3.5 : 1

FOR REFERENCE ONLY

Notes 095 Apply

RESIN DESCRIPTION
01 2558-550115 Bayer Polycarbonate, Clear
03 RX 2530-451118 Bayer Polycarbonate, Radiation Stable Tint

brevet > inc

TITLE:

0.250 DIA Straight
Connector

ORG DRW	NAME	DATE
RE-DRAWN	WGB Adam	4/25/08
ENG & MFG APPR	CHUCK BREWER, JR.	5/1/08

UNLESS OTHERWISE SPECIFIED, TOLERANCES:

DIMENSIONS ARE IN INCHES
FRACTIONAL ± 0.015
ANGULAR: $\pm 1/2$ Deg
ONE PLACE DECIMAL ± 0.015
TWO PLACE DECIMAL ± 0.010
THREE PLACE DECIMAL ± 0.005

PROPRIETARY AND CONFIDENTIAL
THE INFORMATION CONTAINED IN THIS DRAWING IS THE SOLE PROPERTY OF brevet > inc. ANY REPRODUCTION IN PART OR AS A WHOLE WITHOUT THE WRITTEN PERMISSION OF brevet > inc. IS PROHIBITED.

SIZE	DWG. NO.	REV
C	100	D

SCALE: N/A VOLUME (in³): 0.147 SHEET 1 OF 1